



COMPANY INTRODUCTION



About Us

COREX Mining and Consulting Company

- Mining
- Consultancy
- Drilling and equipment sales
- Experienced engineers specializing in their fields with 15 years of expertise
- Industry expertise
- Professional and corporate structure



What Do We Do?

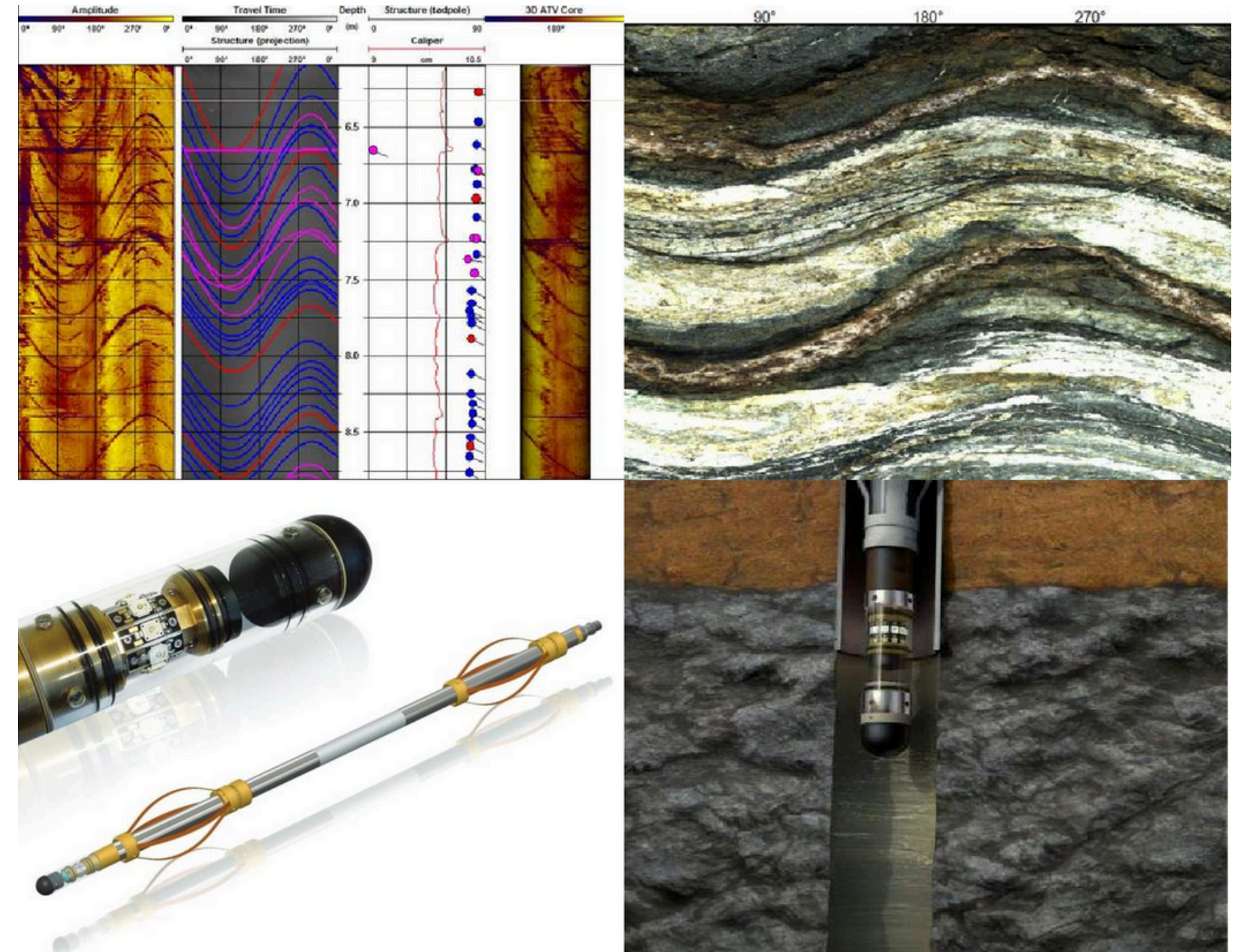
- Mineral Exploration
- Drilling Services
- Drilling Consultancy
- Drilling Machines and Equipment
- Drilling Chemicals
- Hole Screening Systems
- Rock Drilling Equipment
- Synthetic Fiber Reinforcements **KORDSA**
- COREX Academy
- Mining Technologies
 - OTV-ATV
 - **LoadScan** **LOADSCAN**[®]
accurate payload measurement
 - Magnetic exploration



COREX

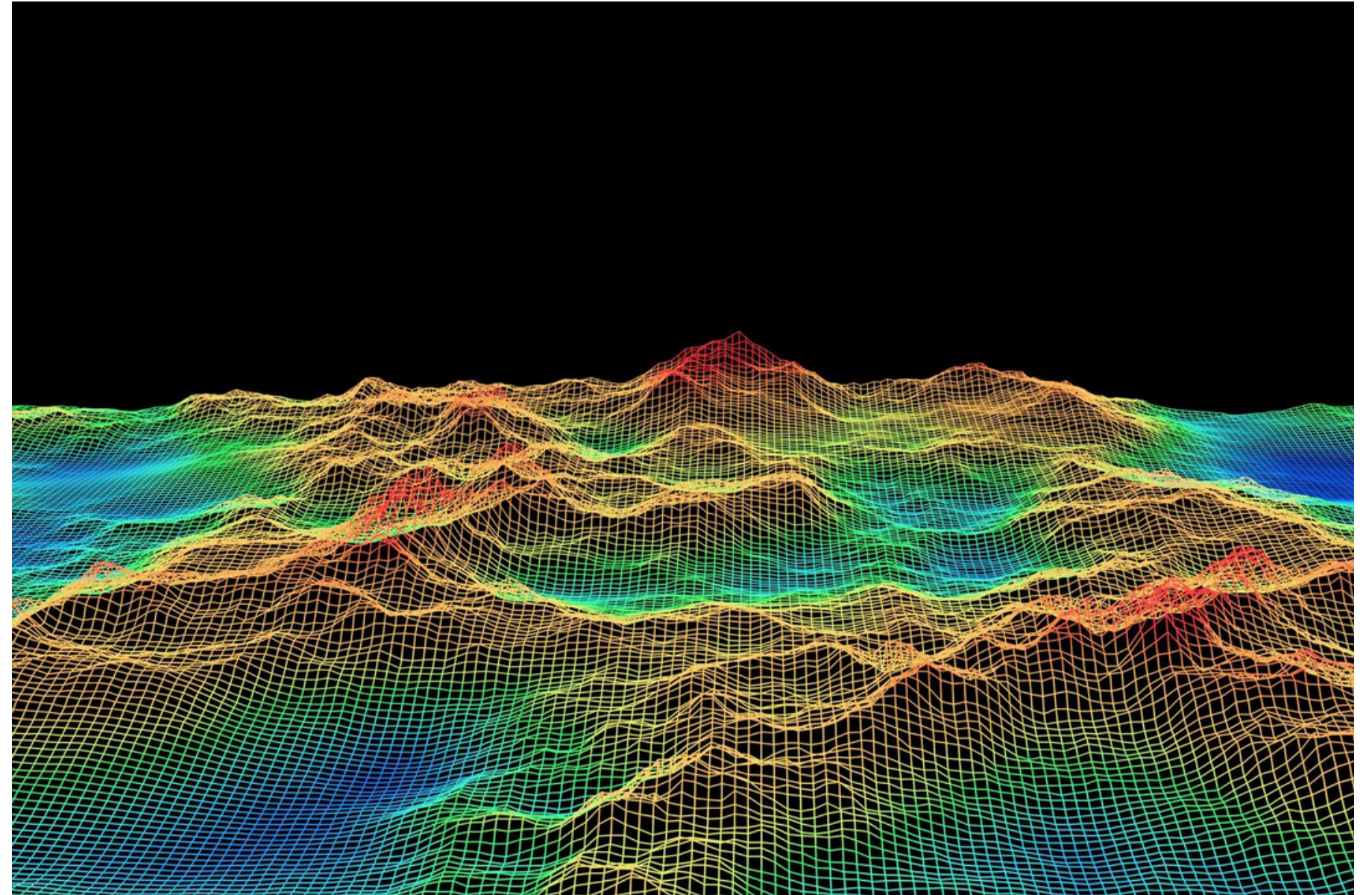
ATV-OTV Hole Visualization Systems

- High Resolution Hole Imaging
- Description, measurement and characterization of fractures and discontinuities
- Collection of Structural and Geological Data from drillholes
- Detailed Caliper Information
- Well Deformation Detection
- Fractured Formation Detection
- Slope Detection



Mineral Exploration and Geology Services

- Geological Survey Services Project
- Due diligence
- Drilling Services
- Geophysical Services
- Environmental Impact Assessment
- Geology, Resource and Reserve Modelling



Drilling Consultancy

- Consulting Expertise
- Strategical planning and analysis
- Technological focused solutions
- Quality control and improvement
- Sustainable environmental consultancy



Drilling Machinery and Equipment

- **Drilling Machines**

- Our expert team offers fast and flexible solutions to customer demands, the most suitable drilling machine alternatives for the project in which the machine will be used, and offers market research in line with the budget of the business partners.

- **Drilling Equipment**

- After more than 15 years of drilling knowledge and experience, we offer the most economical alternatives suitable for the formation in the projects carried out by our business partners.



Synthetic Fiber Reinforcements



- We provide support, particularly for underground mining, by ensuring the procurement of high-performance polymer-based synthetic macro and micro fiber reinforcements. These reinforcements effectively enhance concrete's load-bearing capacity while ensuring efficient crack control.
- Its easy mixability and applicability, along with its superior durability properties, enable it to be used in a variety of construction applications, such as port floor concrete, shotcrete, tunnel lining and precast concrete components.

The exclusive sales authorization for all products related to mining from the mentioned company in Turkey lies solely with COREX Mining



Mining Technologies



- We are partnering with LoadScan, a company aiming to optimize loading issues, which are among the major challenges in mining. Through our collaboration, we aim to advance in the mining technology sector by providing measurement systems that aim to optimize mining performance by providing accurate load information.
- Loadscan laser load volume scanner systems enable optimal loading of trucks by quickly measuring the actual volume of the material you are carrying with an accuracy of +/- 1%, without the truck having to stop.
- It makes the operations more efficient by minimizing the time and cost losses that occur when your trucks are overloaded or underloaded. The system creates visual 3D scans and helps you manage your workforce better by calculating the return transport. It minimizes your truck maintenance costs by preventing unbalanced loads.

The exclusive sales authorization for all products related to mining from the mentioned company in Turkey lies solely with COREX Mining



COREX Academy



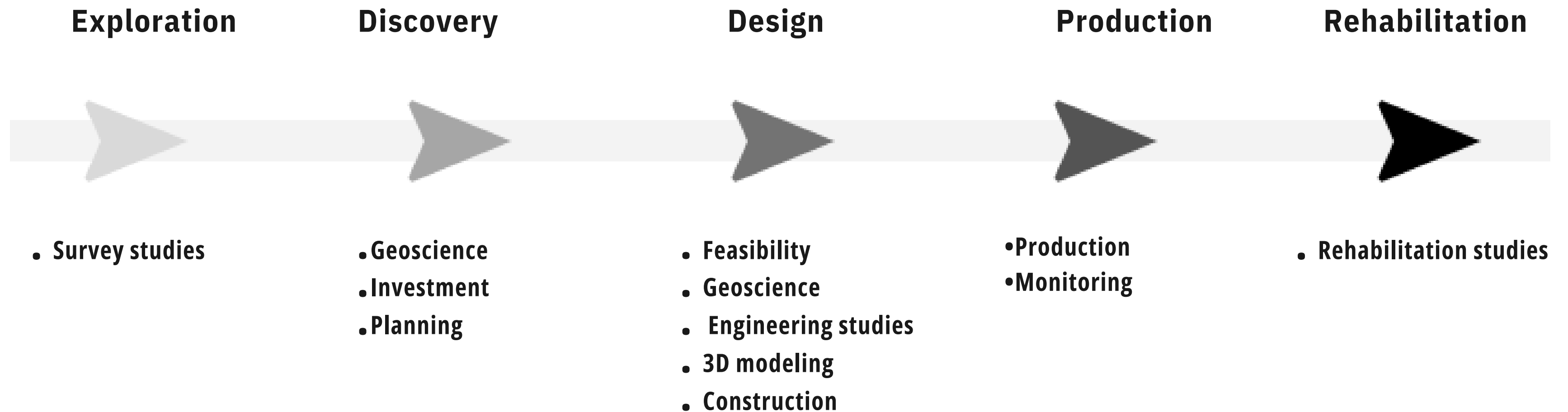
- We contribute to bridging the industry knowledge gap of the promising young talents in our country through our 'COREX Academy' program, which is being conducted in collaboration with leading universities in Turkey under the leadership of our company and KordSA.
- We employed 12 colleagues who we included in our “COREX Academy First Step” program, along with 5 academics who supported our project at METU and Osmangazi University. Our interviews to take place in the upcoming period:
 - Ankara/Middle East Technical University
 - Eskişehir/Osmangazi University
 - İzmir/Dokuz Eylül University
 - Sivas/Cumhuriyet University
 - Istanbul Technical University
 - Elazığ/Fırat University



Why COREX?

STAGES OF MINING

COREX has the expertise to cover all stages of a mine's life cycle



Our Business Partners





www.corexmining.com